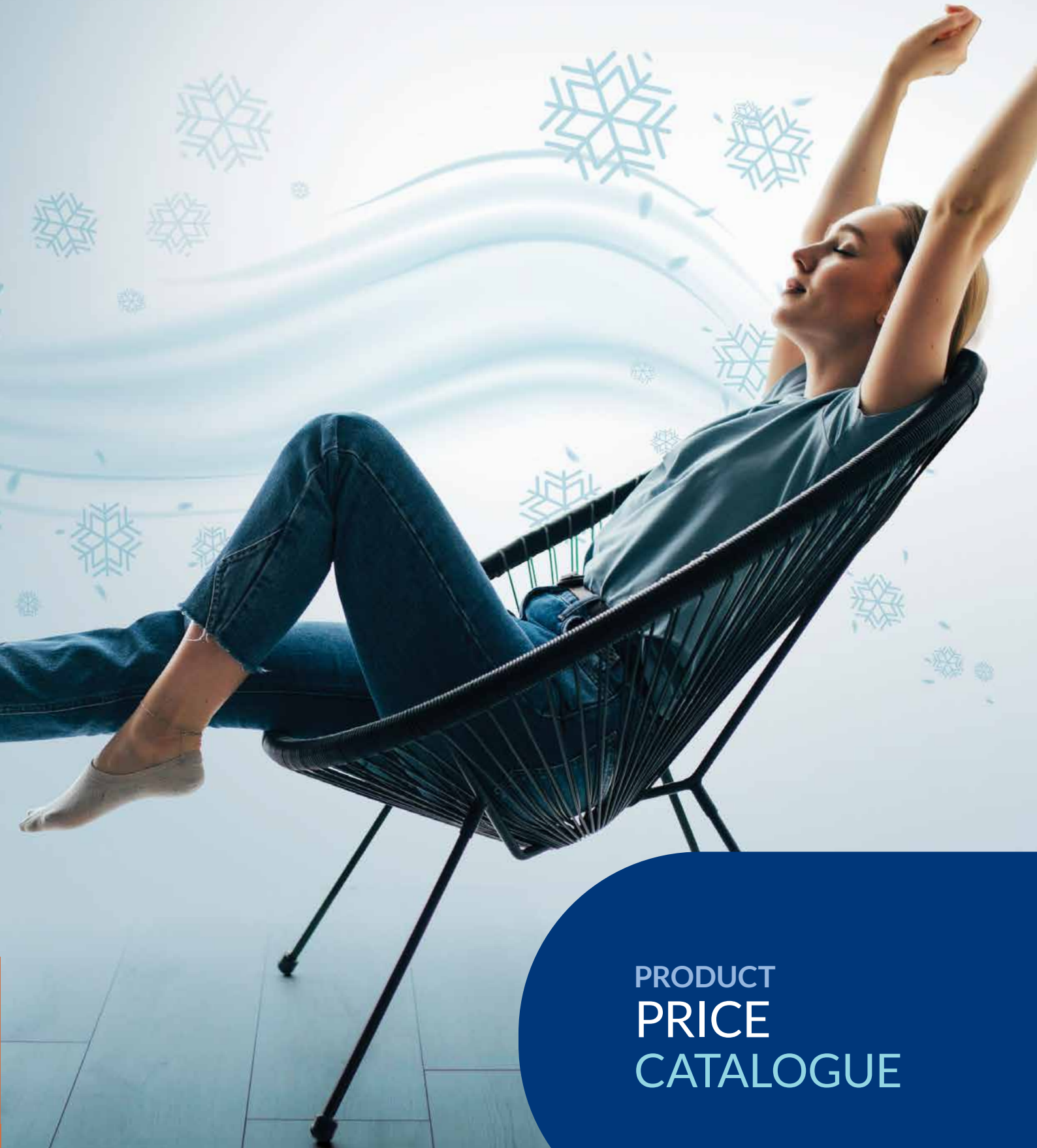


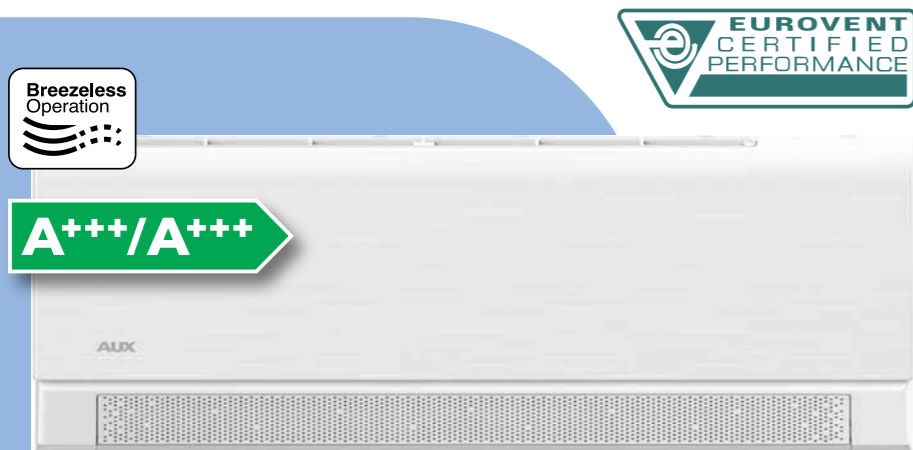
AUX



PRODUCT
PRICE
CATALOGUE

C-Type

Efficient, Smart, Attractive, Healthy, Comfortable. It has it all!



9000Btu €600	12000Btu €640
18000Btu €980	24000Btu €1220



C-Type Black

9000 Btu	€670
12000 Btu	€710
18000 Btu	€1080
24000 Btu	€1300



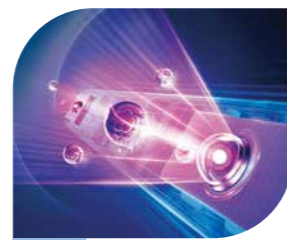
Breezeless Operation

The indoor unit of Type C series features innovative louver design with 2430 nano openings, which ensure perfect and delicate airflow distribution in the whole room.



High End Controller

Type C features a high-end remote controller, offering one-touch access to all AC functions for enhanced convenience.



UV Light Protection

Type C series feature UV lamp for air purification, effectively eliminating viruses, fungi, and micro-organisms, recommended for allergy sufferers and infection-prone individuals.



Window Open Sensor

Type C includes a window detection sensor that automatically halts operation when the window is open, optimizing efficiency and safety.

MODEL	ASW-H09B7A4/CAR3DI-EU	ASW-H12C5A4/CAR3DI-EU	ASW-H18E3A4/CAR3DI-EU	ASW-H24F4A4/CAR3DI-EU
Cooling Capacity Btu/h	9126	12168	18252	24674
Heating Capacity Btu/h	11154	14196	19604	25012
Power Consumption Cooling/Heating kW	0.72(0.1~1.2)	0.87(0.13~1.55)	1.43(0.29~1.95)	1.7(0.23~2.3)
Power Supply V-Hz-Ph	220v-240v	220v-240v	220v-240v	220v-240v
SEER/ WSCOP	A+++/A+++	A+++/A+++	A+++/A+++	A+++/A+++
Noise Level in/out (max) dB(A)	54/61	56/62	56/63	62/65
Air Flow Volume m3/h	700	650	1000	1300
Indoor Unit Dimensions WxDxH(mm)	774x299x202	834x299x202	1145x331x230	1145x331x230
Outdoor Unit Dimensions WxDxH(mm)	709x280x536	705x279x530	785x300x555	900x700x350
Liquid Pipe Ø	6.35(1/4)	6.35(1/4)	6.35(1/4)	6.35(1/4)
Gas Pipe Ø	9.52(3/8)	9.52(3/8)	12.7(1/2)	15.88(5/8)
Room Coverage m ²	20	25	35	50

J-Smart

The J-Smart series is characterized by a minimalist, discreet styling, and ultra silent operation.



9000Btu €525	12000Btu €555
18000Btu €890	24000Btu €1130



Sleep Mode

Sleep function adjusts temperature by 1°C hourly for 2 hours, then maintains for 5 hours before shutting off, ensuring comfort and energy efficiency.



Long Distance Airflow

Coolness reaching every corner of the room as far as 15 meters, being more comfortable.



Ultra Silent Operation - 20dBa

The JSmart Series ensures peaceful sleep with whisper-like 20 dB noise level, akin to rustling leaves.



Autoclean Function

Self-cleaning function alternates cooling/heating modes at low speed to collect dust, expel moisture, prevent bacterial/mold growth, maintaining clean environment.

MODEL	ASW-H09B5A4/JAR3DI-EU	ASW-H12C5D4/JAR3DI-EU	ASW-H18E3G4/JAR3DI-EU	ASW-H24F7A4/JAR3DI-EU
Cooling Capacity Btu/h	9126	12168	18252	24336
Heating Capacity Btu/h	10140	12844	18928	24566
Power Consumption Cooling/Heating kW	0.8(0.1~1.6)	1.18(0.1~1.6)	1.58(0.29~2.1)	2.2(0.23~2.76)
Power Supply V-Hz-Ph	220v-240v	220v-240v	220v-240v	220v-240v
SEER/ WSCOP	A++/A+++	A++/A+++	A++/A+++	A++/A+++
Noise Level in/out (max) dB(A)	54/61	53/62	57/62	63/66
Air Flow Volume m3/h	600	600	850	1300
Indoor Unit Dimensions WxDxH(mm)	792x292x201	792x292x201	940x316x224	1132x330x232
Outdoor Unit Dimensions WxDxH(mm)	705x279x530	705x279x530	785x300x555	900x350x700
Liquid Pipe Ø	6.35(1/4)	6.35(1/4)	6.35(1/4)	6.35(1/4)
Gas Pipe Ø	9.52(3/8)	9.52(3/8)	12.7(1/2)	15.88(5/8)
Room Coverage m ²	20	25	35	50

Freedom

The Freedom Series with its Inverter technology and energy class A++ guarantee high energy efficiency and reliability.



- 9000Btu €485
- 12000Btu €510
- 18000Btu €810
- 24000Btu €1070

- 5 YEARS WARRANTY
- R32
- High Quality DC Inverter
- Wifi
- Type L Remote Control
- Voice Activation Module Optional



4D Airflow
Experience 4-Dimensional cooling with horizontal and vertical swing action ensuring better airflow while giving uniform cooling.



Ifeel Function
The remote's built-in temperature sensor detects ambient temperatures and adjusts room settings for more precise comfort.



Quick Cooling & Heating
The DC Inverter compressor achieves full cooling in 30 seconds, heating in 1 minute, reaching 3900 RPM in 30 seconds.

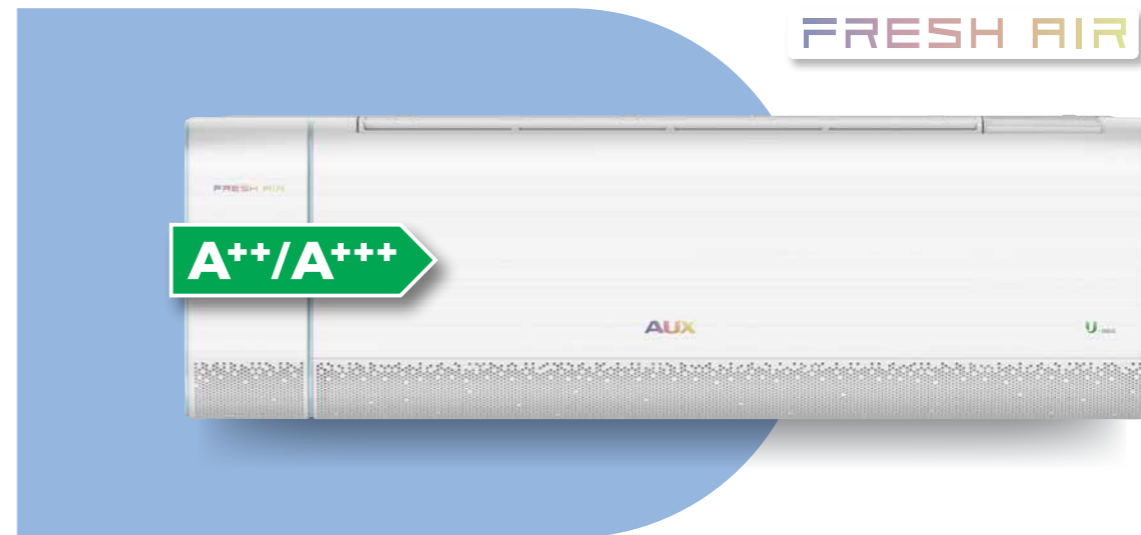


Independent Dehumidification
In dry mode, the AC acts as a dehumidifier, removing moisture, enhancing air quality with freshness.

MODEL	ASW-H09B5A4/FAR3DI-EU	ASW-H12C5E4/FAR3DI-EU	ASW-H18E0B4/FAR3DI-EU	ASW-H24F7B4/FAR3DI-EU
Cooling Capacity Btu/h	9126	12168	18083	24336
Heating Capacity Btu/h	10140	12844	18590	24566
Power Consumption Cooling/Heating kW	0.85(0.1~1.6)	1.18(0.1~1.6)	1.52(0.28~1.70)	2.2(0.23~2.76)
Power Supply V-Hz-Ph	220v-240v	220v-240v	220v-240v	220v-240v
SEER/ WSCOP	A++/A+++	A++/A+++	A++/A+++	A++/A+++
Noise Level in/out (max) dB(A)	53/61	53/62	57/62	63/66
Air Flow Volume m3/h	600	600	850	1300
Indoor Unit Dimensions WxDxH(mm)	750x285x200	750x285x200	900x310x225	1082x330x233
Outdoor Unit Dimensions WxDxH(mm)	705x279x530	705x279x530	715x280x537	900x350x700
Liquid Pipe Ø	6.35(1/4)	6.35(1/4)	6.35(1/4)	6.35(1/4)
Gas Pipe Ø	9.52(3/8)	9.52(3/8)	12.7(1/2)	15.88(5/8)
Room Coverage m ²	20	25	35	50

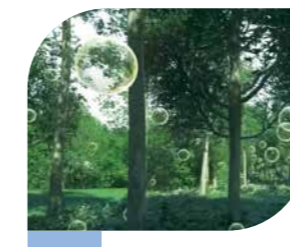
Q-pro Fresh Air

The Qpro is characterized by its unique functionality and design.



12000Btu
€680
Coming Soon

- 5 YEARS WARRANTY
- R32
- High Quality DC Inverter
- Wifi
- Type T Remote Control
- Voice Activation Module Optional



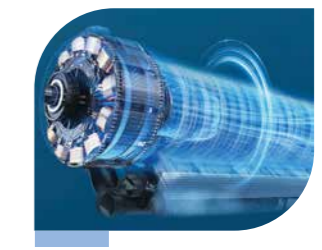
Fresh Air Oxygen Module
The "fresh air supply option" introduces outside air, enhancing ventilation, air quality, comfort, and customization for healthier indoor environments.



Breezeless Operation
Qpro features breezeless operation, enabling soft breeze even with closed louvers, optimizing comfort and airflow customization for enhanced user experience.



Diamond Shape Design
Qpro boasts a distinctive diamond-shaped design, blending uniqueness with style for a visually striking addition to any space.



Autoclean Function
Self-cleaning function alternates cooling/heating modes at low speed to collect dust, expel moisture, prevent bacterial/mold growth, maintaining clean environment.

MODEL	ASW-H12C5A4/BQAR3DI-EU
Cooling Capacity Btu/h	12168
Heating Capacity Btu/h	12506
Power Consumption Cooling/Heating kW	1.2(0.1~1.6)
Power Supply V-Hz-Ph	220v-240v
SEER/ WSCOP	A++/A+++
Noise Level in/out (max) dB(A)	51/62
Air Flow Volume m3/h	500
Indoor Unit Dimensions WxDxH(mm)	960x305x219
Outdoor Unit Dimensions WxDxH(mm)	705x279x530
Liquid Pipe Ø	6.35(1/4)
Gas Pipe Ø	9.52(3/8)
Room Coverage m ²	25

Cassete Type

Quiet, Efficient with 360°C Airflow.



- 12000Btu €1210
- 18000Btu €1450
- 24000Btu €1790
- 48000Btu €3290

- 5 YEARS WARRANTY
- R32
- Type L Remote Control
- Voice Activation Module Optional
- BMS Connectivity Optional
- Wired Controller Optional
- Central Controller Optional
- Wifi Optional



360 Degrees Airflow

AUX Roundflow cassettes distribute cooled air evenly with corner outlets, providing 360° coverage, perfect for effectively air-conditioning large rooms for maximum comfort.



Fresh Air Intake

AUX Cassettes feature a fresh air inlet option, improving ventilation and indoor air quality for a healthier and more comfortable environment.



Easy Maintenance

Easy removal of key components for easy cleaning and maintenance.



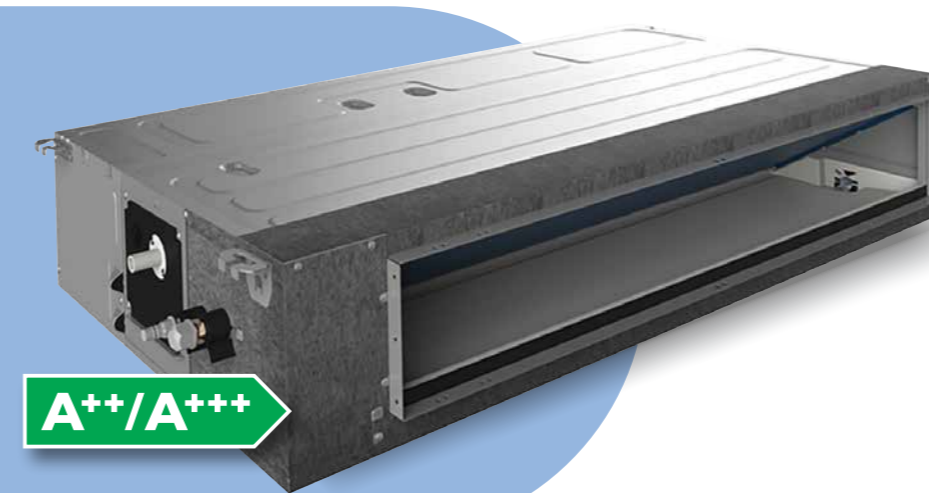
Built in Drain Pump

Automatically starts The device is equipped with a condensate pump with a high lifting height. This allows for flexible connection of the condensate drainage piping in a suspended ceiling space.

MODEL	AUCA-H12/NDR3HY2A	AUCA-H18/NDR3HY2A	AUCA-H24/NDR3HY2A	AUCA-H48/SDR3HYB
Cooling Capacity Btu/h	12000(4600-15000)	18000(5200-19100)	24000(7400-28000)	48000(16241-49474)
Heating Capacity Btu/h	13000(4200-18100)	19100(4800-21200)	27300(6800-31700)	55000(16309-59028)
Consumption Cooling/ Heating kW	1.03(0.26-1.60)	1.55(0.47-2.30)	2.10(0.67-3.30)	5.20(1.71-6.70)
Rated Cooling / Heating Current (A)	4.48(1.13-6.96)	6.74(2.04-10.00)	9.13(2.91-14.35)	9.00(1.50-15.00)
SEER/SCOP	6.1/4.0	6.1/4.0	6.1/4.0	6.1/4.0
Sound Power Noise Level - (dB)	52	56	56	64
Air Flow Volume m³/h	700	760	1500	2000
Dimensions Net(Body)WxDxH(mm)	570×570×260	570×570×260	840×840×246	840×840×288
Weight (Body/Panel) Kg	15.5/2.2	15.5/2.2	26/5.3	30/5.3
Dimensions Net(Panel) WxDxH(mm)	650×650×55	650×650×55	950×950×55	950×950×55
Pipe (Liquid) Ø	6.35(1/4)	6.35(1/4)	9.52(3/8)	9.52(3/8)
Pipe (Gas) Ø	12.7(1/2)	12.7(1/2)	15.88(5/8)	19.05(3/4)
Applicable Area m	25	35	50	100

Duct Type

Discreet, Stylish design Solution.



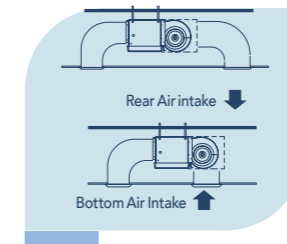
- 12000Btu €1210
- 18000Btu €1450
- 24000Btu €1790
- 48000Btu €3290

- 5 YEARS WARRANTY
- R32
- Wired Controller
- Type L Remote Control
- Voice Activation Module Optional
- BMS Connectivity Optional
- Central Controller Optional
- Wifi Optional



Ultra Thin Design

AUX duct units' ultra-thin design (245mm) allows installation in tight spaces, ensuring versatility and convenience even in challenging locations.



Fresh Air Intake

AUX duct units provide the flexibility of a fresh air intake, enhancing indoor air quality and ventilation for heightened comfort and well-being.



Adjustable ESP 0 - 160Pa

The adjustable static pressure range of 0 to 160 Pa offers flexible installation design, facilitating long-distance ventilation duct distribution with ease.



Built in Drain Pump

The device is equipped with a condensate pump with a high lifting height. This allows for flexible connection of the condensate drainage piping in a suspended ceiling space.

MODEL	AUMD-H12/NDR3HM2	AUMD-H18/NDR3HM2A	AUMD-H24/NDR3HM2	AUMD-H48/SDR3HA
Cooling Capacity Btu/h	12000(4600-15000)	18000(5200-19100)	24000(7400-28000)	48000(16241-56639)
Heating Capacity Btu/h	13000(4200-18100)	19100(4800-21200)	27000(6800-31700)	55000(16309-62781)
Consumption Cooling/ Heating kW	1.03(0.26-1.60)	1.55(0.47-2.30)	2.17(0.67-3.30)	5.00(1.71-6.60)
Rated Cooling / Heating Current (A)	4.48(1.13-6.96)	6.73(2.04-10.00)	9.43(2.91-14.35)	9.00(1.50-15.00)
SEER/SCOP	6.1/4.0	6.1/4.0	6.1/4.1	6.1/4.0
Sound Power Noise Level - (dB)	52	53	55	64
Air Flow Volume m³/h	720	900	1400	2300
Dimensions Net(Body)WxDxH(mm)	700×700×245	700×700×245	1000×700×245	1400×700×245
Weight (Body) Kg	21	22	32	42
ESP (Pa)	25(0~160)	25(0~160)	25(0~160)	50(0~160)
Pipe (Liquid) Ø	6.35(1/4)	6.35(1/4)	9.52(3/8)	9.52(3/8)
Pipe (Gas) Ø	12.7(1/2)	12.7(1/2)	15.88(5/8)	15.88(5/8)
Applicable Area m	25	35	50	100

Ceiling & Floor

Flexible Installation Option



18000Btu
€1480

24000Btu
€1860

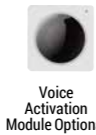
48000Btu
€3190

5 YEARS WARRANTY

R32



Type L Remote Control



Voice Activation Module Optional



BMS Connectivity Optional



Wired Controller Optional



Central Controller Optional



Wifi Optional



3D Airflow

Thanks to automatic control of air flow volume and air flow direction, comfortable air conditioning of the entire room can be done effectively.



Fresh Air Intake

AUX Ceiling & Floor Types feature a fresh air inlet option, improving ventilation and indoor air quality for a healthier and more comfortable environment.



Modern Design

AUX ceiling & floor units blend minimalistic aesthetics with Japanese R&D influence, ensuring suitability for any space design.



Anti Condensation

Automatically starts Ceiling and floor ACs with anti-condensation design prevent moisture buildup, ensuring reliable performance, minimal water damage, and improved indoor air quality.

MODEL	AUCF-H18/NDR3HF2	AUCF-H24/NDR3HF2	AUCF-H48/SDR3HF
Cooling Capacity Btu/h	18000(5500-20500)	24000(7400-28000)	48000(16200-49500)
Heating Capacity Btu/h	19450(4800-24600)	26000(6800-31700)	54600(16300-58000)
Consumption Cooling/ Heating kW	1.55(0.47~2.30)	2.50(0.67~3.56)	5.20(1.71~6.70)
Rated Cooling / Heating Current (A)	6.74(2.09-10.00)	9.57(3.21-15.63)	9.00(1.50~15.00)
SEER/SCOP	6.1/4.0	6.2/4.0	6.1/4.0
Sound Power Noise Level - (dB)	51	52	61
Air Flow Volume m³/h	900	1230	2040
Dimensions Net(Body)WxDxH(mm)	1000x690x235	1280x690x235	1600x690x235
Weight (Body) Kg	28	34	41
Operation Temperature Range (°C)	16~32	16~32	16~32
Pipe (Liquid) Ø	6.35(1/4)	9.52(3/8)	9.52(3/8)
Pipe (Gas) Ø	12.7(1/2)	15.88(5/8)	19.05(3/4)
Applicable Area m	35	50	100

Floor Standing

Powerful Cooling Solution.



24000Btu
€1770

48000Btu
€2950



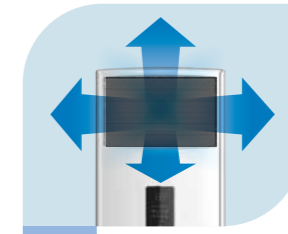
Type L Remote Control



Wifi Optional

5 YEARS WARRANTY

R32



4D Airflow

Experience 4-Dimensional cooling with horizontal and vertical swing action ensuring better airflow while giving uniform cooling.



Long Distance Airflow 18m

Achieving coolness throughout the room, extending up to 18 meters, for enhanced comfort and coverage.



WIFI Function

AC Freedom app controls ACs via Wi-Fi, allowing customization of modes, temperatures, and fan speeds for multiple devices with user-friendly interface.



Strong Airflow outlet

Floor standing model features powerful airflow outlet for efficient cooling and heating, ensuring optimal comfort in any room.



DC Motor



AS Fan blade

MODEL	ASF-H24G2A4/HAR1DI-C0	ASF-H48J4A5/APAR3DI-C0
Cooling Capacity Btu/h	24000(5340-26000)	48000(21970-52390)
Heating Capacity Btu/h	24000(4732-26000)	48000(16900-54080)
Consumption Cooling/ Heating kW	2.5 (0.14-2.60)	5.35(1.30-6.00)
Rated Cooling / Heating Current (A)	7.9 (1.7-14.5)	9(2.5-10.0)
SEER/SCOP	6.2/4.0	6.1/4.0
Noise Level in/out (max) dB(A)	56	66
Air Flow Volume m³/h	1200	2100
Dimensions Net(Body)WxDxH(mm)	350x430x1856	580x1925x400
Weight (Body) Kg	36	52
Operation Temperature Range (°C)	16~32	16~32
Pipe (Liquid) Ø	9.52(3/8)	9.52(3/8)
Pipe (Gas) Ø	15.88(5/8)	19.05(3/4)
Applicable Area m	50	100



AI 290 Thermal Heat Pumps



AUXSOL

Energy Management Solutions



A complete Solution
to your Space Heating
and Hot Water Needs

- A+++**
Energy Efficiency
- R290**
Refrigerant Gas
- 🔇**
Silent Operation
- 📶**
WIFI Control
- 🔧**
Easy Installation
- 🧩**
Multiple Solutions

AUXSOL leads in energy management with residential PV inverters, battery storage, and commercial systems. Our cloud platform enables remote optimization for seamless efficiency. Contact your local dealer for a free consultation.

AUX

Complete Solutions



opticlma

INTELLIGENT LIVING SOLUTIONS

Larnaca Office: Archbishop Kyprianou 7, Aradippou, Tel: 24252937, e-mail: info@opticlma.net

Nicosia Office: Smyrnis 5, Strovolos, Tel: 24252937, email: info@opticlma.net

Limassol Office: Steliou Kyriakidi 39, Limassol, Tel: +357 25258190, e-mail: info@opticlma.net

www.auxcyprus.com

